

Quadra ULink

First Time Use Instructions

Anywhere Map Quadra units can be updated via a USB connection to a Windows PC. The update process is very similar to the WiFi method. **Remember that the Quadra ULink utility is a Download/Pre-Installer only and the updates will still need to be installed on the Quadra device itself once you use this utility.** No WiFi connection is needed to update a Quadra handheld when using ULink. The ULink tool also offers tremendous speed advantages compared to updating via WiFi, especially when updating the larger databases such as Low/High Enroute charts, Sectionals, and Approach Plates.

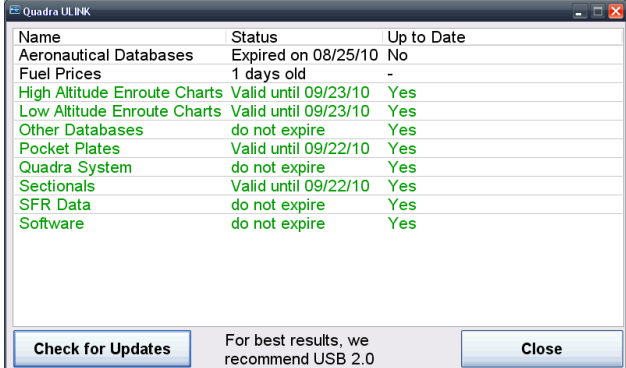
1. Download and install the Quadra ULink USB download tool from www.anywheremap.com/quadra . This will place a shortcut to launch the application on your PC's Desktop. It may also be run from >Start >Programs >Anywhere Map >Quadra ULink.

2. Power the Quadra unit OFF (not suspend), then power it back on. Once it returns to the 3 icon Title Screen (unlocked), plug it into the PC through the supplied USB cable and let Windows recognize that it is plugged in (generally an 'Auto-Play' window will come up automatically which can be closed as it is not needed. Vista and Windows 7 users may need to click "Continue without Scanning" if prompted). If the unit never gets recognized, see [Troubleshooting Tip #1](#) below. Once the Quadra is recognized by Windows, run Quadra ULink. This should bring up the Current Update Status screen, which shows details about what data is currently installed in the unit (shown in figure 1.1). It is normal for this screen to be blank or populated incorrectly the first time you run updates.

3. Older firmware revisions on your Quadra device may require installation of a Critical Update. Critical updates must be downloaded and installed on the Quadra before you can proceed with the normal update procedures. Figure 1.2 shows the Critical Update warning screen. If this screen comes up when running ULink, click the *Download and Install this Critical*

Firmware Update button to start this process. When complete (as illustrated in Figure 1.3), click OK, which closes ULink, then unplug your Quadra from the USB cable and Power OFF (not Suspend) your Quadra, then power it back ON. The Critical Updates will install during the boot sequence and will only take a few moments. When the firmware installation finishes, unlock your Quadra and plug it back into the USB cable to proceed with the normal update sequence.

4. Run the Quadra ULink utility and click the *Check for Updates* button (as shown in Figure 1.1). This will produce a list of available updates for your Quadra (illustrated in Figure 1.4).



The screenshot shows the 'Quadra ULink' application window with a table of update statuses. The table has three columns: Name, Status, and Up to Date. Below the table are buttons for 'Check for Updates', 'Close', and a note: 'For best results, we recommend USB 2.0'.

Name	Status	Up to Date
Aeronautical Databases	Expired on 08/25/10	No
Fuel Prices	1 days old	-
High Altitude Enroute Charts	Valid until 09/23/10	Yes
Low Altitude Enroute Charts	Valid until 09/23/10	Yes
Other Databases	do not expire	Yes
Pocket Plates	Valid until 09/22/10	Yes
Quadra System	do not expire	Yes
Sectionals	Valid until 09/22/10	Yes
SFR Data	do not expire	Yes
Software	do not expire	Yes

Figure 1.1

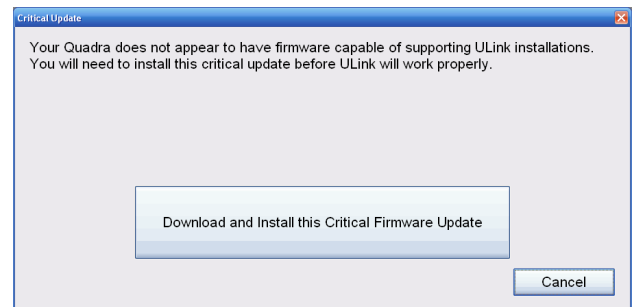


Figure 1.2

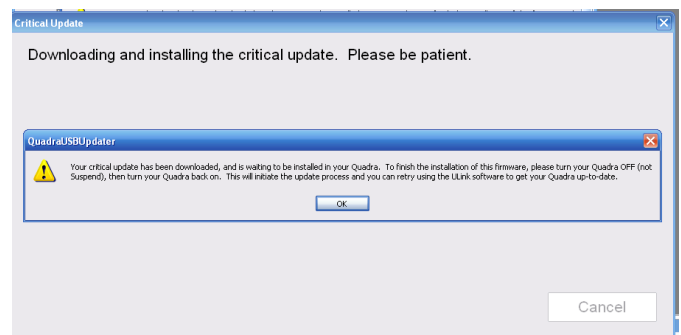


Figure 1.3

Figure 1.4

Next, click the *Download and Pre-Install* button, you are presented with the list of updates to be downloaded. To defer a download until a later time, you can click on it to change the status to 'No' and it will not be downloaded/preinstalled at this time. Choose the desired updates you wish to pre-install, (as shown in figure 1.5), then click the *Download and Pre-Install* button again to begin the download and pre-installation process. The ULink tool downloads all databases directly to the data card of the unit. Once completed, a message will confirm this as shown in Figure 1.6.

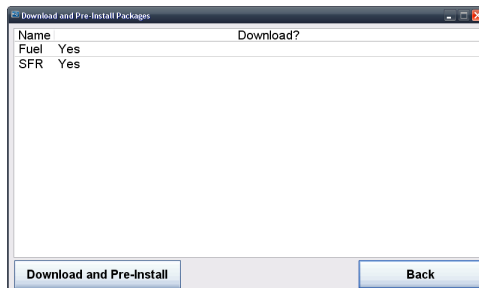
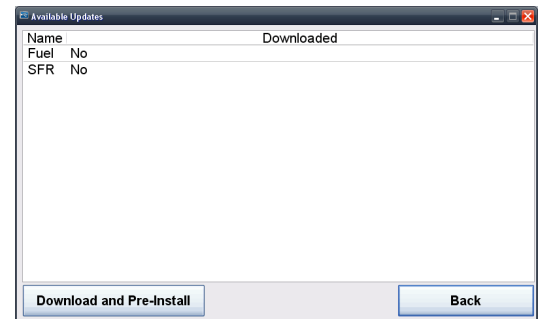


Figure 1.5

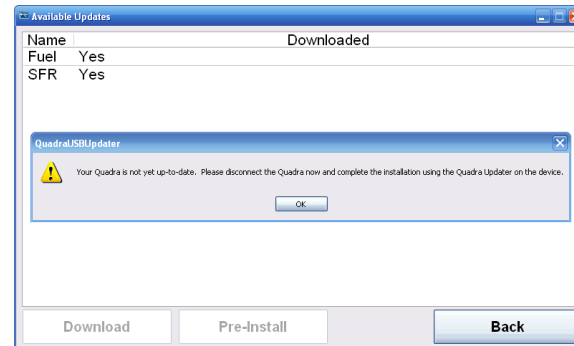
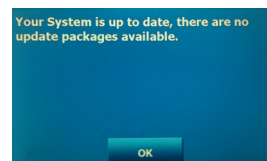
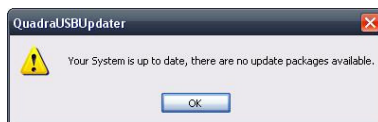
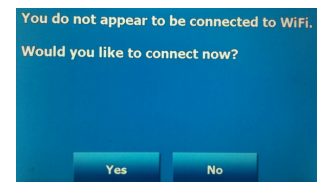
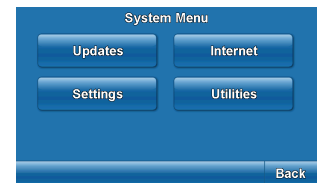


Figure 1.6

NOTE: Your QUADRA is not yet up to date.

Remember: Downloaded/Pre-Installed updates from ULink on your PC must be Installed using the Updates button on the Quadra device itself. The updates are not yet installed onto the device, and will not appear in the software until you finish the installation on your Quadra device.

- To finish the installation of updates on the Quadra once they are Pre-Installed through ULink, unplug the Quadra from the USB cable. Tap the 'Gears' button in the lower left corner of the *Quadra Main Menu* to open the *System Menu*, then tap the *Updates* button (If you see an error that the SD Card cannot be found see [Troubleshooting Tip #2](#) below). On the *Current Update Status* screen press the *Updates* button in the lower left. When prompted to connect to WiFi, simply press *NO* since the updates are already Pre-Installed by ULink. Finally, click the *Install* button, followed by *Install Now*. This will install all available updates that have been Pre-Installed into the Quadra by ULink. When finished, a message box will be presented which reads *Install Complete*. Click *OK*, then click *Back* then click *Close* to exit the Quadra Updates mode. If a restart is necessary, you will be prompted to do so and clicking *OK* will initiate the restart. The Quadra is now up to date and ready to use.



Troubleshooting Tip #1: Early firmware versions of Quadra handhelds (previous to 2.0.400) may not be recognized by a PC when plugged into a USB port. In this case, the data card may be removed from the Quadra and inserted into a portable or integrated Secure Digital High Capacity media card slot. After installing the Critical Updates in step 3 remove the card from the media card slot and re-insert it into the Quadra, then Power the Quadra OFF (not suspend), then power it back ON and proceed to step 4.

Troubleshooting Tip #2: The Quadra handhelds have access to the data card only when the card is inserted and it is **NOT** connected through USB to the host PC. When the Quadra is connected through USB, the card can only be accessed by the host PC, and not by the Quadra itself (none of the Anywhere Map, Pocket Plates, Via Anywhere, or Updates Areas can be accessed while the unit is plugged in through USB to the host PC).

Troubleshooting Tip #3: If any issues are encountered while using ULink, try re-downloading the most current version of this tool at www.anywheremap.com/quadra