

Creating A Flight Plan

Create a flight plan

1. Tap **Universal Finder** icon
2. Tap in ident box
3. Tap **identifier** (w/o "K"), note airport ident displays
4. Tap **Waypoint**

Add a waypoint (using Universal Finder)

1. Tap **Universal Finder**
2. Tap waypoint type tab at top (Airport, VOR, FIX, User WPT)
3. Tap in ident box
4. Type **identifier** (w/o "K"), note waypoint ident displays
5. Tap **Waypoint**
6. Tap **As a waypoint**

Add a waypoint (using screen)

1. Note waypoint on screen (navaid, airport, fix)
2. Double tap the item
3. Tap **Wpt/Fly To**
4. Tap **As a waypoint**

Flight Plan Amendments and Management

Flight Plan Screen

Tap File > Flight Plan

To remove a waypoint:

1. Tap once on a waypoint to select it
2. Tap **Delete WP**

To re-sequence a waypoint

1. Tap once on a waypoint to select it
2. Tap **Edit** tab
3. Tap **Move Up** or **Move Down**

To Save a Flight Plan

1. Tap **File** tab
2. Tap **Save**
3. Tap in **Save As:** box
4. Type in flight plan name
5. Tap **OK**

To Load a saved flight plan

1. Tap **File** tab
2. Tap **Load**
3. Tap on flight plan name to select it
4. Tap **OK**

To clear a flight plan

1. Tap **File** tab
2. Tap **Clear**
3. Confirm **Yes**

Start Up Checklist

1. Start aircraft
2. GPS ON / XM Pwr. **ON** (as required)
3. Check LED lights **ON**
4. PDA **ON**/ Soft reset
5. Check PDA BT **ON** (as required)
6. Start AWM

Shut Down checklist

1. Shut down AWM: **File > Exit > Yes** (backup periodically)
2. Power **OFF** iPadQ
3. Power **OFF** GPS
4. Power down Aircraft

Universal Finder

1. Tap **Universal Finder** icon
2. Select item type (Airport, NavAid, FIX, User Wpt)
3. Select **FAV** (favorites) or **NEAR** (sorts 8 nearest to current posit)
4. Tap in box, keyboard pops up
5. Begin typing in ident, list shortens as you go
6. Select from ID list
7. Tap **Waypoint** or **Jump** as required

To Airport (using screen)

1. Tap **File > Personal Digital CoPilot**
2. Check Box: "Begin Descent at VNAV...."

VNAV

To Airport (using screen)

1. Tap **File > Personal Digital CoPilot**
2. Check Box: "Begin Descent at VNAV...."

To Waypoint

1. Tap **File > Flight Plan**
2. Tap the waypoint for which VNAV is to be set.
3. Tap **Create** tab
4. Tap **VNAV**
5. Move slider to desired altitude or tap to right or left of the slider to move it (slider only moves in 500' increments, fine tune with L/R switch.)
6. Tap **OK**
7. Rate of Descent / Climb shows in lower right corner of map. Target Arc (intersection with VNAV altitude based on current RoD/RoC) shows on flight path ahead.

Virtual ILS (with flight plan)

1. Double tap destination airport or use universal finder.
2. Tap approach tab down left side
3. Tap VILS for runway of choice
4. Tap **Activate Approach**
5. Modify VILS parameters as required
6. Tap **USE**



Tap on a METAR for information.

Double tap on airport for undecoded METAR.

Pocket Plates Guide

Drill down

1. Tap Region, State, City name, Airport (if required), Approach

Follow flight plan

1. Tap follow flight plan, tap Approach

Approaches versus STARs and minima

1. STARs and minima buttons on list pages
2. Tap to view
3. From plate, hold stylus on screen, tap from pop-up menu

Moving around the plate

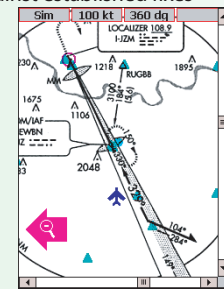
1. Plates open in full page orientation view
2. One tap becomes center point of 1:1 view
3. Blue dot shows center of screen
4. Tapping around blue dot moves plate that direction.

Calibrate

1. Press and hold on screen, pick Calibrate from pop-up menu
2. Read fix name (such as FAF) and then tap it
3. Select fix from pop-up list
4. Read second fix name (IAF, second final approach fix or VOR)
5. Select fix from pop-up
6. Check position of triangle fixes against established fixes
7. Tap **Yes** if OK or **No** to start over

AWM/PP toggle

1. In Pocket Plates, Tap **File > Hot Keys**
2. Assign one function button to "AnywhereMap"
3. In AnywhereMap, Tap **File > Settings > Hot Keys**
4. Assign SAME function button to "Pocket Plates"
5. Function button now toggles between PP and AWM



Track your position on a calibrated approach plate.

Anywhere Map Legend

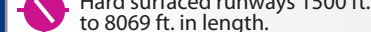
- OBSTRUCTIONS**
- 1000 ft. and higher AGL
 - below 1000 ft. AGL
 - Group Obstruction



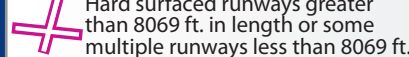
VOR



Non-Directional Radiobeacon



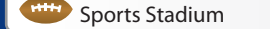
Hard surfaced runways 1500 ft. to 8069 ft. in length.



Hard surfaced runways greater than 8069 ft. in length or some multiple runways less than 8069 ft.



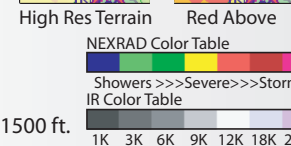
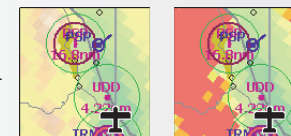
Fix



Nuclear Power Plant



Sports Stadium



Graphical METars

Ceiling	Visibility
>3000 ft.	>5 mi.
1-3000 ft.	3-5 mi.
500-1000 ft.	1-3 mi.
<500 ft.	<1 mi.

- Stadium, nuke, ADIZ
- Prohibited
- Class B, C
- Class D