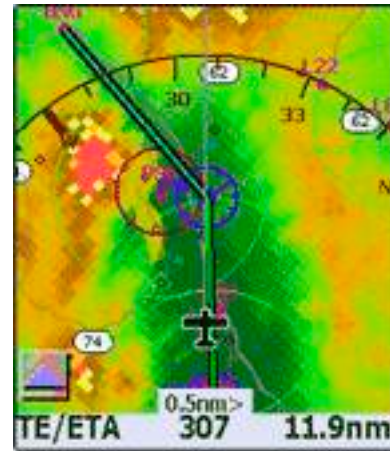
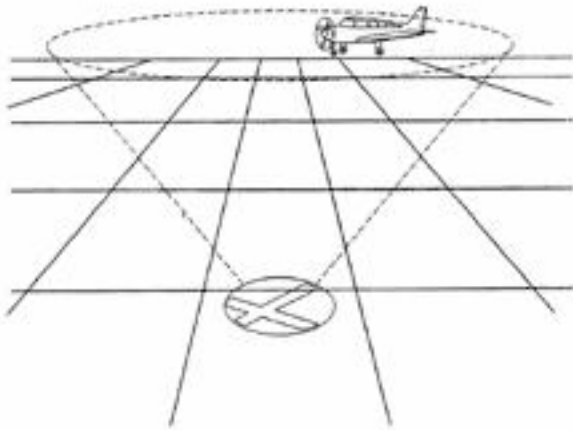


ANYWHERE MAP® RECEIVES PATENT FOR CONES OF SAFETY®

Moving Map Safety Tool Highlights Aircraft's Glide Range to Nearby Airports

December 10, 2004—Pittsburg KS:

Cones of Safety®, a key safety feature in Control Vision's Anywhere Map color GPS, was recently issued US patent number 6,804,585. The product is an integral part of the moving map's Personal Digital Co-Pilot® system of flight safety features. In flight, Cones of Safety highlights a circle around all airports within which the aircraft can safely glide to a landing. The circle's diameter varies with the aircraft's glide ratio, a value entered by the pilot in the aircraft profile, and its current altitude AGL. This safe-glide zone is the shape of an inverted cone, giving the product its name.



President and CEO Jay Humbard commented, "Being within gliding range of an airport is one of the best pieces of information available to the pilot of an aircraft in distress. This is information Anywhere Map shows continuously during the normal course of flight."

Cones of Safety is also instrumental in flight planning, Humbard pointed out. By illustrating overlapping Cones in the vicinity of the flight plan, the pilot can adjust his course to keep within gliding range of airports during most or all of the flight.

"Cones of Safety adds an important margin of safety when used with Anywhere Map's new Emergency Mode," said VP Engineering, Greg Yotz. The Emergency Mode draws a direct flight plan to any nearby airport specified on the map. "Cones of Safety shows the pilot which airports he is actually capable of reaching should the aircraft lose power," he said.

#

Contact:
Richard Herbst
VP Marketing, Control Vision
rherbst@anywheremap.com
620 231-6647 Ext 102