

## “SEE THE FUTURE” WITH ANYWHEREMAP’S NEW GRAPHICAL TAFs!

Pittsburg, KS: Control Vision Corp., maker of AnywhereMap, announces another new industry-leading capability of its navigation systems: Now you can see ceiling and visibility information from the Terminal Area Forecasts (TAFs) in graphic form.

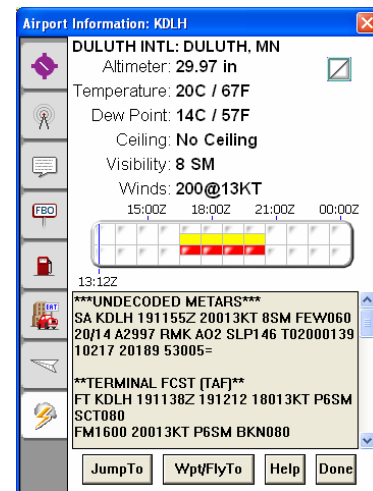
We all know that METARs and TAFs should have long since been put in text form so the average pilot who has birthdays and car payments to remember can actually glean some knowledge from these aviation weather reports. We’re not sure who the last teletype machine user is, or where he is, but it’s time to give it up. Until we find this nostalgia-monger and rip the old machine from his hands we decided to create another simple way to view and understand this weather information.

For several years AnywhereMap pilots have been able to quickly see the prevailing ceiling and visibility at any airport in the country simply by looking at the color-coding of the graphic sitting astride each reporting airport symbol on the Map. Recently AnywhereMap gained the ability to show the METAR text *de-coded* by simply tapping once on the METAR flag. You don’t have to leave the navigation display to see the METAR details!



Our graphical TAFs follow the pattern set by the graphical METARs. To see the TAF text you double-tap the airport symbol to retrieve the airport information screen. There are tabs down the left side and when you tap on the lightning bolt tab, you see the weather information for this airport. See image at right.

The TAF text was always in the scrolling box just below the METAR text. Now however, you see a graphical timeline that represents the TAF information. The upper half is for ceiling and the lower half is for visibility, just like our METAR flags. Color coding also is the same with white being for VFR (> 3000' ceiling, > 5 nm visibility), yellow for marginal VFR (1000' <> 3000' ceiling, 3 <> 5 nm visibility), red for IFR (500' <> 1000' ceiling, 1 <> 3 nm visibility) and pink/purple being Low IFR (0' <> 500' ceiling, 0 <> 1 nm visibility).



The timeline shows the hours associated with the forecast (in Zulu time) as we as a marker that shows the current time. You might notice that the top and bottom halves are split into two rows. The outside rows (very top and very bottom) are the FORECAST conditions. The inside rows (lower row of ceiling and upper row of visibility) are the TEMPORARILY FORECAST conditions.