



Anywhere Map®



Quadra Features:

- ✓ Anywhere Map for flight navigation
- ✓ Via Anywhere Street Mapping
- ✓ Wi-Fi hotspot friendly; download free aviation weather; browse web; log flights
- ✓ No PC Required for database updates
- ✓ 4.3", high-definition touch screen
- ✓ Integrated WAAS GPS receiver & Bluetooth
- ✓ Optional Pocket Plates chart viewer
- ✓ Optional XM-WX weather receiver
- ✓ Optional Sectionals and Enroute Charts

(Includes: Quadra with built-in GPS, 12V/24V power, aircraft mount, car mount and 12 mo. data)

Anywhere Map Quadra



The all new Anywhere Map Quadra is a self-updating, dual mode GPS Navigator. The Quadra gets you where you're going in the air AND on the ground. It sports a large touch screen, with easy to tap input buttons which are optimized for in flight use, even in rough air. The bright 4.3" screen has the sharpest resolution of any handheld GPS and the fast dual core processor, makes this the most powerful and most capable portable GPS system available. The Quadra is the only aviation handheld GPS available today that boasts WiFi internet capabilities. This amazing device utilizes the power of wireless internet to update its own aeronautical databases, fuel prices, SFRs, flight planning weather, browse the web, check email, and automatically log flights from any WiFi hotspot! No PC required.

The Quadra comes with everything you need, simply turn it on and it is ready to fly or drive right out of the box. Built into every Quadra system is Via Anywhere street navigation, with talking turn-by-turn guidance for your car, and Anywhere Map for flight planning and airborne GPS operations.

The Anywhere Map Quadra EFB configuration even includes seamless digital Sectional and Low Enroute Charts as well as Pocket Plates 3 for Part 91 legal paperless approach plates.

The Quadra is the ONLY portable GPS with a sharp enough screen to support georeferenced approach plates—you can

actually see the aircraft's GPS position on the approach plate as you fly!

The Quadra is packed with features that Pilots love, including patented Cones of Safety®, Emergency Mode, Personal Digital Co-Pilot®, and obstacle and terrain warning system. The SUAs, TFRs and terminal areas will keep you out of trouble in today's complex airspace. The 100LL.com airport directory and fuel price guide and our pioneering Taxi Express Airport taxiway diagrams are also included giving you unmatched situational awareness in the air and on the ground.



Add an optional XM WX receiver to any Quadra system and you'll get up-to-the-minute XM weather and TFR warnings on the fly. Data is transmitted wirelessly to the Quadra via Bluetooth and even lets you listen to XM audio channels while you monitor the weather (subscriptions required).

This two piece system is less bulky on the yoke and has a far better display than comparable weather systems.



Only Anywhere Map gives you 100LL.com fuel prices in the air. Pilots have reported saving over \$100 in a single fuel stop.



Detailed Map Data:

Over-sized buttons are optimized for a stylus-free interface of function keys and menus. The map screen itself can be panned/scrolls or zoomed with easy tapping/sliding motions.



Pocket Plates 3:

This optional approach plate viewer allows you to see your position on the plate as you fly your approach. The innovative doodle mode allows you to make notes that are automatically saved with each plate.



Automobile Navigation:

On the ground use the Via Anywhere built-in street mapping for turn-by-turn navigation. Find local points of interest like hotels, restaurants and attractions.

Standard Features of the Anywhere Map Quadra

The Nearest Anything™ function shows you everything from nearby airports, NavAids, and Fixes to AWOS and Center Frequencies. Even the FBO with the cheapest fuel can be located with 2 taps on the Quadra screen! The virtual ILS, EFIS Arc, HSI and “flight following” features will help you to be a better pilot. The 100LL.com airport directory and fuel price guide can help you to save thousands of dollars a year in fuel costs alone! Our pioneering Taxi Express™ airport taxiway diagrams are also included giving you unmatched situational awareness in the air and on the ground.

The Anywhere Map Quadra takes full advantage of its ability to connect to a WiFi hotspot and access the Internet.

Using WiFi every Quadra can download aviation weather data items such as Nexrad, METARs, and TAFs. In addition it can download Temporary Flight

Additional Standard Features

- Integrated Airport directory
- 100LL.com fuel prices
- Free access to online logbook
- Airport taxi diagrams
- Best terrain resolution- 180 meter!
- Simulated instruments overlay the map screen
- Portrait or Landscape display modes
- Patented Cones of Safety® glide prediction system
- Personal Digital CoPilot® Reminders and Alerts

“Using WiFi every Quadra can download aviation weather data items such as Nexrad, METARs, and TAFs.”

Restrictions (TFR’s), current 100LL and Jet-A fuel prices, and Airport Directory/FBO information. The Quadra can also use Anywhere Link to update it’s own aeronautical database, Approach Plates, Sectionals, Low Enroute IFR charts, and even file flight plans online!

\$595 Quadra Base System Includes:

Quadra, Air/Street navigation, 12V/24V power adapter, 110V AC power adapter, aircraft mount, car mount, USB cable, 4GB memory card, and 12 mo. aviation data updates.

\$795 Quadra MAX System Includes:

Quadra, Air/Street navigation, Sectional Charts, 12V/24V power adapter, 110V AC power adapter, aircraft mount, car mount, USB cable, and 8GB memory card. 12 mo. aviation data updates.

\$995 Quadra EFB System Includes:

Quadra, Air/Street navigation, Sectional Charts, Pocket Plates, Enroute Charts, 12V/24V power adapter, 110V AC power adapter, aircraft mount, car mount, USB cable, 8GB memory card, and 12 mo. aviation data updates. 12 mo. Pocket Plates updates.



*I just got into Wichita... I love the new Anywhere Map!
This is so perfect for what we need and very user friendly.
Thank you so much!!*

*Amanda Franklin
Franklin's Flying Circus & Younkin Airshows.
www.franklinairshow.com*

Anywhere Map Quadra MAX

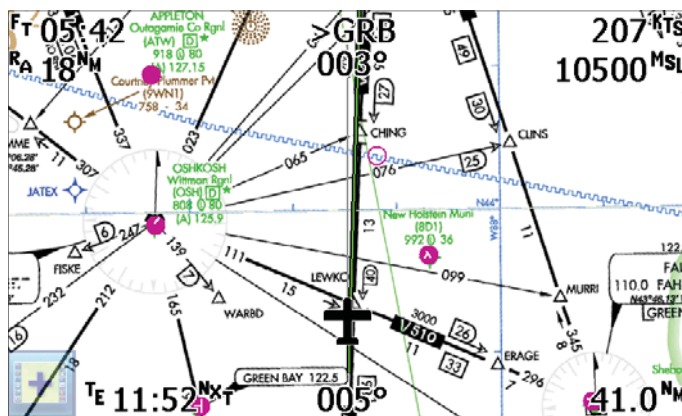
The Quadra MAX system configuration adds digital georeferenced sectional charts to a base Quadra setup. These scanned sectionals eliminate the hassle of fumbling, folding, and refolding paper charts in-flight.



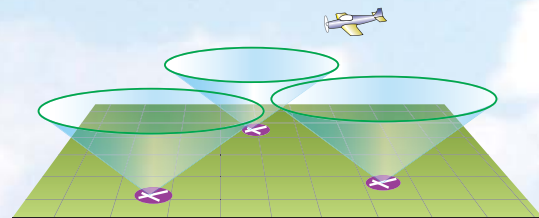
Sectionals appear like a 'wallpaper' or background for the moving map screen. Any additional items may be displayed over the top of the sectional background for a highly customizable moving map! Digital charts are seamlessly 'stitched' together to completely hide the traditional boundaries of the original sectional charts, so the user never needs to know which map to unfold.

Anywhere Map Quadra EFB

The Quadra EFB configuration is the ultimate in portable GPS navigation. This premium configuration adds digital Low Enroute IFR and Sectional Charts as well as Pocket Plates® georeferenced approach plates (TERPS) to a base Quadra setup. The entire 12,000+ page library of current NACO (FAA) approach procedures, along with all the Arrivals (STARs) and Departures (SIDs). Sectionals and Low Enroute IFR charts are preloaded putting every necessary bit of flight information at your fingertips. Just like the Quadra MAX system, the Sectionals, or Low Enroute IFR Charts are seamlessly applied to the display.



A simple, self contained online update function automatically keeps the charts current using any WiFi Internet connection available. Updates to the digital Sectionals are covered by the same Anywhere Map subscription, no additional subscriptions are required.



Patented Cones of Safety:

This feature converts GPS altitude, elevation and glide ratio into safe glide zones (green circles) around all airports. Invaluable, especially when you're flying at night.

About two hours after liftoff I was south of Louisville in IMC conditions and told by ATC to climb from 6000 feet to 9000 feet. As I passed though 7000 feet MY ENGINE SNAPPED AN EXHAUST VALVE. With no power and in IMC I contacted ATC and told them of my problem. I also looked at my new Anywhere Map in front of me and saw those beautiful green circles that surround every airport within gliding distance from my plane.

I had numerous choices because of my altitude and when ATC said State your intentions, it was Direct Standiford where there were nice long runways and emergency equipment if I needed it. I broke out of the clouds at about 3500 feet with that wonderful runway right in front of me and the prop stopped on my airplane. The landing was one of the best I had made in quite a while. Not a scratch on me or the plane thanks to Anywhere Map and the great controllers at Louisville.

Thanks for helping me be here to write this and thanks to your staff...

Vince Scott



Feature	Quadra	AV80R	Aera 550
Graphics Resolution	800 by 480 (Sharpest)	480 by 320 (Blocky)	480 by 320 (Blocky)
Screen Size	4.3" diagonal	4.3" diagonal	4.3" diagonal
Weight	6.2 oz	7.6 oz	9.5 oz
Terrain Resolution	180 Meter (Sharpest)	1 Kilometer (Blocky)	270 Meter (Blocky)
Airport Taxi diagrams	Taxi Express™	No	Safe Taxi™
Online logbook (Integrated)	Yes	No	No
Cones of Safety®	Patented exclusive	No	No
HSI Readout	On map	No	Instrument page only
Obstacle Warnings	Yes	Yes	Yes
Turn Rate Indicator	On map	No	Instrument page only
VNAV Computing	Extensive	No	Yes
Airport Directory	Yes	No	Yes
In-Flight Fuel Prices	Free first year	Limited	No
Private Airports	Yes	No	Yes
Victor Airways	Yes	No	No
Upgrades (Plates/Sectionals/Low Enroute)	\$445	No	No
TFR and SFRs	Free web download or by XM	XM ONLY	XM Only
Street Nav Mode	Yes	Yes	Yes
Voice Prompts	Yes	Yes	Yes
3D Navigation	Yes	Yes	Yes
Unit Conversion	Yes	Yes	No
WiFi	Yes	No	No
28 Day Data (12 months)	\$115 (includes obstacles)	\$229	\$495 (with obstacles)
Map Price	\$595	\$673 (street price)	\$1499 (Aera 550)
XM WX Upgrade	\$695	\$659	\$1999 (Aera 560)*

*No XM WX Upgrade Available



Aircraft Integration:

While others seem to approach mounting or powering options as an after thought, 10 years of experience have taught us that these details make a big difference in the day-to-day use of the system.

There's no requirement that your GPS is up-to-date, but if you're using it for airport information or approach plates, it almost has to be—or you risk a minimum of embarrassment and the potential for much worse. Part of your purchase decision should include how much the subscriptions you need will cost.
—Aviation Consumer 2/10



Learn more at www.anywheremap.com