



# Anywhere Map®



## Anywhere Map Duo: Large Screen Leadership

The Anywhere Map Duo system includes the award winning Anywhere Map®, Pocket Plates® approach plate viewer, and our unmatched XM weather package. The software has been enhanced to leverage the power and resources of Windows tablet computer systems.

Anywhere Map offers sharp detail and an array of exclusive features, including our patented Cones of Safety®, 100LL.com fuel prices, “best in the business” UltraTAWS™ 90 meter (3 arc-seconds) terrain mapping, and MaxNAV™ sectional charts with high and low enroute charts\*.

The extra power of the tablet brings you the fastest, sharpest, most detailed maps you have ever seen—with powerful terrain and obstacle warning systems, detailed aviation data including nav aids, airspace, airways, SUAs and TFRs, plus advanced flight tools like VNAV, Virtual ILS, HSI, flight planning, weight & balance, flight calculator, and an Airport Guide with exclusive 100LL.com fuel prices.

The highly refined touch screen interface is far superior to any button click, twist interface on the market. Anywhere Map puts powerful functions right at your fingertips. The first time you use the drag and pan function you'll be hooked. Creating flight plans by simply tapping on an airport or VOR is child's play.

While you are flying, the Personal Digital Co-Pilot® tracks your flight and issues reminders like “Switch Fuel Tanks” and “Begin Descent” along with Obstacle and Terrain Warnings. The patented Cones of Safety®



displays circles around nearby airports based on your aircraft glideslope settings. Know your landing options with just a glance at the display.

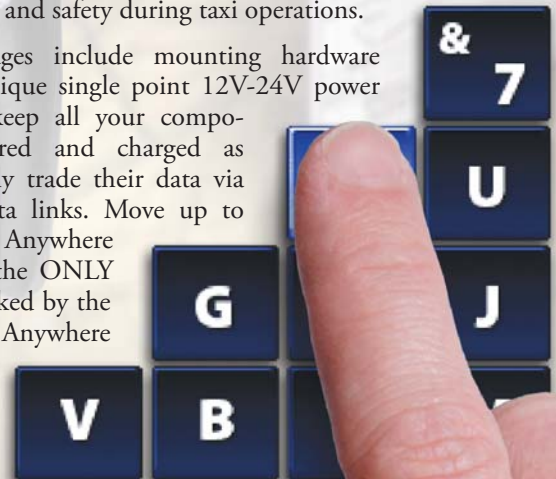
Anywhere Map PRO displays XM weather enroute and for advanced flight planning, download internet based weather while on the ground. Upgrading to XM WX can be done at anytime.



Taxi Express paints your aircraft's position on airport diagrams at all major airports, greatly enhancing your confidence and safety during taxi operations.

Our packages include mounting hardware and our unique single point 12V-24V power supply to keep all your components powered and charged as they wirelessly trade their data via Bluetooth data links. Move up to the world of Anywhere Map PRO – the ONLY EFB system backed by the experience of the Anywhere

Map team!




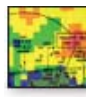
\*Requires the UltraTAWS Expansion Pack sold separately from AWM PRO software.


Features a rough air friendly on-screen keyboard

## Next Generation Approach Plates

**Pocket Plates® 3** is the ultimate approach plate viewing system. Pocket Plates integrates with Anywhere Map on the PRO system, and even works with the Anywhere Travel Companion. The New Pocket Plates includes many revolutionary features, including:

 An all new “Doodle mode” allows the pilot to “mark up” any Plate – and these annotations are automatically saved with the original plate image.

 Systems with XM WX can overlay real-time, semi-transparent, NEXRAD and other weather information on the approach chart.

 The optional UltraTAWSTM Expansion Pack not only enhances the Map, but also adds high-resolution terrain on the approach plate. The TAWS like display features can be enabled or disabled on the plate with a simple toggle button.

The advanced graphical interface and rough-air friendly pop up keyboard makes finding any approach, arrival, departure, or airport diagram fast and easy, and it is well engineered for the busy single pilot IFR cockpit.

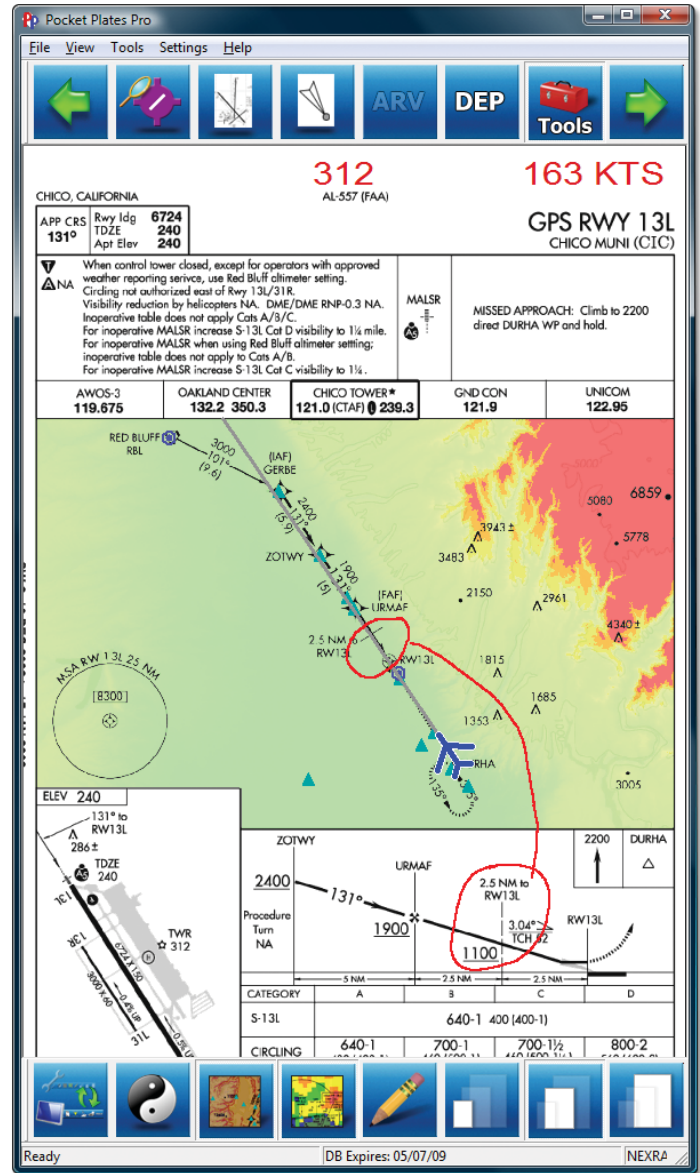
Pocket Plates 3 improves on previous versions with sharper plate images, 100% factory pre-calibration of all plates, and many convenient zoom options. Pocket Plates keeps the best features of the original Pocket Plates family, including automatic online updating, the ability to user calibrate, graphical procedure retrieval, and integration with the extremely popular Anywhere Map family of products.

By adding the topographical and weather information to the NACO plate basemap, Pocket Plates 3 provides the pilot with uniquely powerful situational awareness. It is truly the next-generation of approach plate viewing systems.

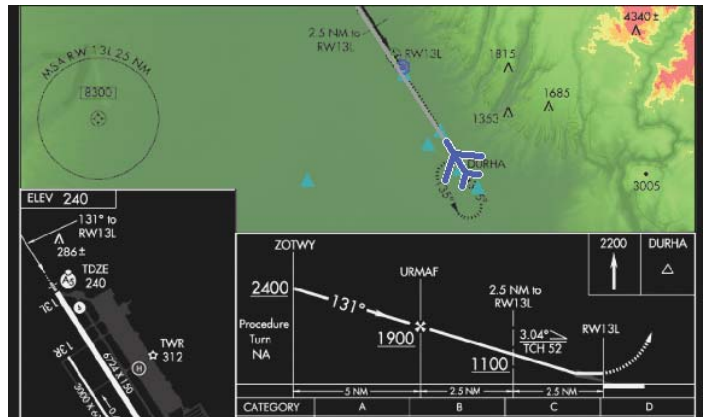
### Major Pocket Plates 3 Features

- Sharp plate images with multiple zoom levels
- GPS Driven Aircraft position shown on all plates (pre-calibrated)
- Altitude sensitive TAWS Terrain warnings show on plate\*
- Doodle mode allows marking up approach procedures on the plate
- XM WX NEXRAD and Metar information overlay on any plate\*\*
- Share GPS and Weather information with Anywhere Map Pro
- Stylus free operation on tablet computers – rough air-friendly ease of use
- Integrated with Map – tap on an airport on the map to see the plates.
- Automatic online updating system
- Versatile plate printing support
- Day or Night viewing mode

\*High-res terrain requires UltraTAWSTM Expansion Pack  
\*\* XM WX subscription required



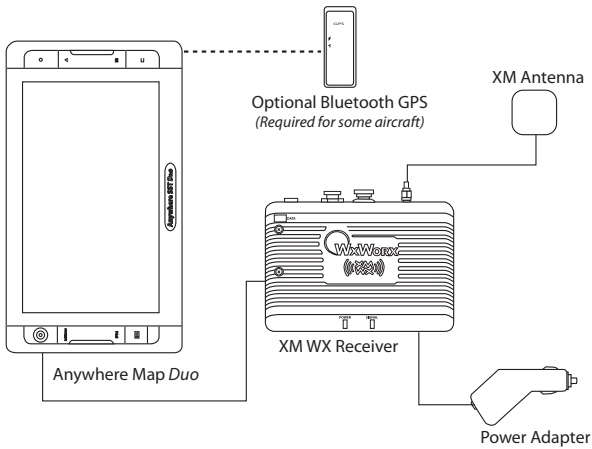
Pocket Plates 3 shows your position as you fly your approach along with your own onscreen notations. Optional UltraTAWSTM gives you high resolution terrain on the plate.



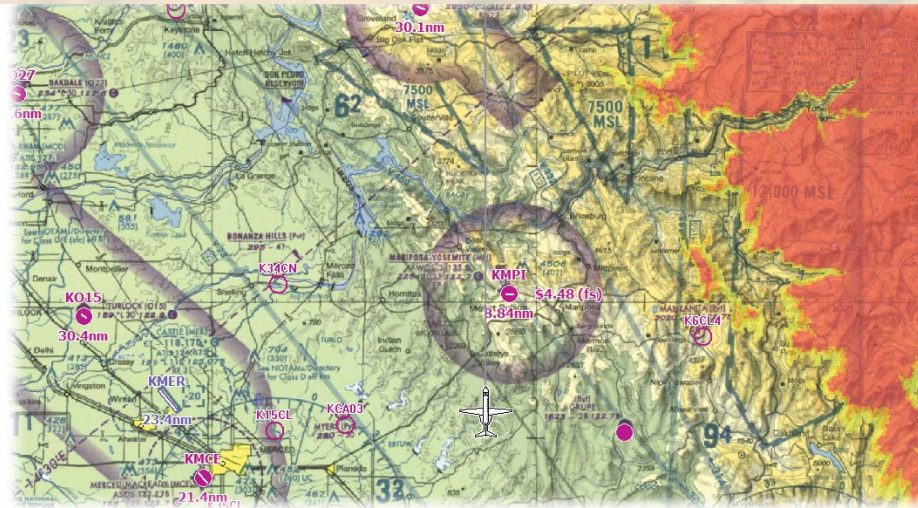
Switching to night mode automatically darkens terrain and reverses the black and white plate information.



Learn more at [www.anywheremap.com](http://www.anywheremap.com)



**All Anywhere Map Duo Systems include:**  
 the Duo Solid state tablet with pre-installed air and street navigation software, the universal 12-28V power adapter, GPS, and mounting kit. Systems require a single 12-28V power connection. Bluetooth technology minimizes wiring.



### UltraTAWS™ / MaxNav™ Expansion Pack

How do you make the best Mapping System even better? By adding “best-in-the-business” terrain, digital sectionals and enroute charts!

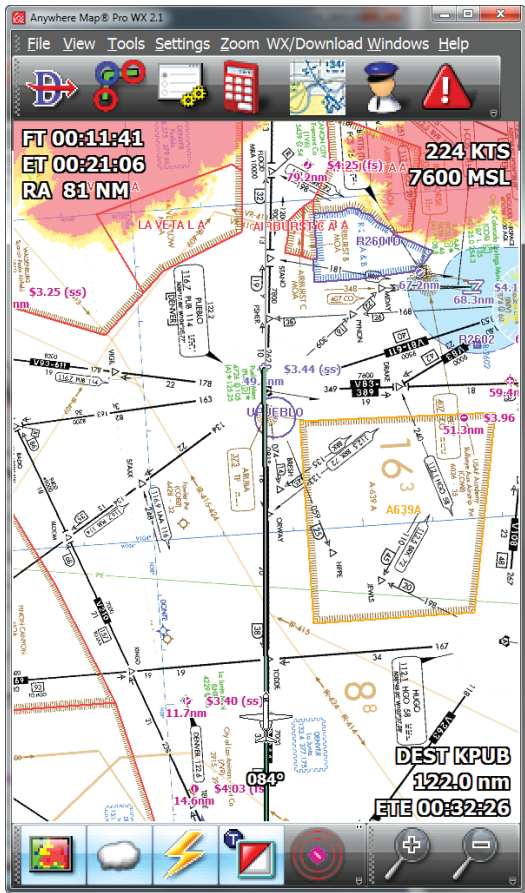
UltraTAWS™ features over 300 times the resolution of any previous version of Anywhere Map. The coverage area currently includes the Caribbean, Hawaii, and most of North America (up to 60 degrees north latitude). UltraTAWS terrain is shown with 90 meter precision. This results in a stunning display of fine terrain details, allowing small ridges and gullies to be easily depicted.

MaxNAV™ adds crisp digital sectional chart images. The sectional charts images can be used in combination with any other Anywhere Map features, including Terrain warnings, weather, holding patterns, active airspace, rubber-band flight planning and more. With MaxNav-On-Board you have a digital “finger-on-the-map” that shows your precise position at all times.

The geo-referenced images of the official FAA VFR Sectional charts are seamlessly stitched together to form a continuous background image covering the entire continental US, plus Alaska and Hawaii. With MaxNAV, the traditional paper charts become the backdrop for a user configurable digital vector map, adding a lot of detail that is missing on any other GPS map. Like a digital map, the user can tap on features for more information. Airspace boundaries can highlight if they are of concern. Obstacles can highlight when they pose a threat. Ultra TAWS terrain data can even be overlaid on the base map, highlighting threatening terrain with a red overlay. Even XM WX Nexrad can be overlaid on the Sectional map image with variable transparency.

MaxNAV is VERY fast, and has no impact on the update rate of the digital map. MaxNAV supports both north up and track up modes. The user can add MaxNAV to any map screen in Anywhere Map, allowing any map view to use the sectional data as a backdrop.

The seamless nature of MaxNAV completely hides the traditional boundaries of the original Sectional charts. Individual chart tiles are each stamped with an expiration date, and a simple online process automatically keeps the map tiles current and up-to-date. Sectional map and enroute chart updates are included in the standard Anywhere Map updates at no extra cost, for UltraTAWS customers.



Enroute Chart with Red Above Terrain warning.

#### Anywhere Map Duo Systems

(Includes Solid State Tablet, Anywhere Map PRO, Pocket Plates 3, Smart 12V/24V Power, Mount, 6 mo. map and plate data)  
*Upgrade to XM weather at any time!*

#### Anywhere Map Duo Systems with XM WX

(Includes Solid State Tablet computer, Anywhere Map PRO, Pocket Plates 3, Smart 12V/24V Power, Mount, 6 mo. map and plate data, XM Receiver)

## Compare the Garmin 696 and the Anywhere Map Duo

The Anywhere Map Duo™ is optimized for the pilot. The big, bright, 7.0" diagonal touch screen is the same size, but has nearly twice the resolution, of the '696. The powerful tablet computer guarantees very fast map updates. The 32 gigabytes of solid state storage are unaffected by shock, temperature, or altitude, unlike delicate spinning hard disk drives of the past.

Anywhere Map PRO software on the Duo offers sharp map detail and an array of exclusive features, including our patented Cones of Safety®, 100LL.com fuel prices, the "best in the business" UltraTAWS™ 90 meter terrain mapping, and the newly released MaxNAV™ electronic sectional charts. NO other Aviation mapping system offers any two of these features. **The 696 cannot match any of these features.**

| Duo                      | AV80R ACE               | '696                    |                                  |
|--------------------------|-------------------------|-------------------------|----------------------------------|
| ✓                        | ✓                       | ✓                       | Navigation, XM Weather, Plates   |
| \$1,795                  | \$1,995                 | \$2,695                 | Map Price                        |
| \$2,495                  | \$2,522                 | \$3,295                 | Map with XM WX                   |
| \$260                    | \$819                   | \$1,300                 | Annual map data subscriptions    |
| ✓                        | ✓                       | N/A                     | Touch-screen                     |
| ✓                        | ✓                       | N/A                     | Fuel prices                      |
| ✓                        | ✓                       | N/A                     | GPS enabled approach plates      |
| ✓                        | ✓                       | N/A                     | Enroute Charts                   |
| ✓                        | N/A                     | N/A                     | Sectional map overlays           |
| ✓                        | N/A                     | N/A                     | Lifetime subscription available  |
| ✓                        | N/A                     | N/A                     | 90 meter terrain (3 arc-seconds) |
| ✓                        | N/A                     | N/A                     | Terrain awareness on plate       |
| ✓                        | N/A                     | N/A                     | Cones of Safety®                 |
| Fastest                  | Slow                    | Quick                   | Speed                            |
| 600 x 1024<br>7" Display | 480 x 800<br>7" Display | 480 x 800<br>7" Display | Screen resolution                |

air. Our touch screen technology ensures that common flight operations are easily accomplished without a stylus, and data entry is quick and easy on our automatic "big key" on screen keyboard that appears whenever data entry is required. Looking up an airport is as simple as tapping the "Look up" touch screen button and tapping "O-S-H" with your finger on the keyboard that appears.

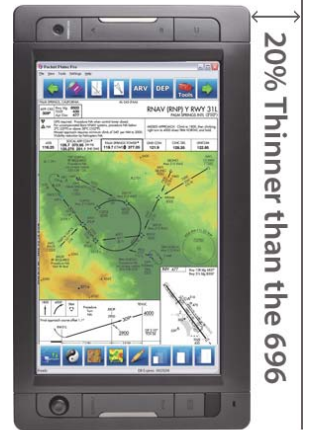
The Duo system is a full fledged Windows computer system, and supports Wireless networking and Bluetooth. You can print plates, view user installed checklists and aircraft documents, and even browse the Internet, watch movies, check email, and run other Windows software on the Duo. The battery life is exceptional at 3.5 to 4 hours. With all this power, the Duo weighs in at about 1.1 lbs, or about 38% less than the Garmin 696.

### Conclusion:

Why spend \$1000 more and then be saddled with over \$1000 a year in update costs? The Anywhere Map Pro Duo system does MUCH more, is EASIER to use, and will save you thousands of dollars!



Only Anywhere Map gives you 100LL.com fuel prices in the air. Pilots have reported saving hundreds of dollars in a single fuel stop.



20% Thinner than the 696

Same Size Screen

Both the 696 and the Duo have taxi diagrams, obstacles, airways, Airport Directory, simulated instruments, optional XM weather, and extensive aeronautical databases.



Pocket Plates not only shows the aircraft position on the plate, but it gives the option to add UltraTAWS Terrain and even XM WX NEXRAD over the plate. The Pilot can even "mark up" a plate by writing notes over the plate image using the touch screen. Critical altitude? Circle it and the annotation will be there the next time the plate is called up. Don't try this on a '696!

Pocket Plates® PRO is the best Plate viewer in the industry. The higher resolution of the Duo screen delivers much more plate detail at any zoom level.

Both units come preloaded with all the plates, but the plates on the G696 are just pictures. The 696 doesn't offer any provision to overlay the aircraft position on the plate image! With an approach plate up on the screen, the 696 becomes a (very expensive) electronic book, GPS navigation is hidden while the plate is up on the screen.

While the twisty knob joystick on the 696 is an improvement over previous Garmin products, our rough air friendly, touch screen keyboard is MUCH simpler to use, even in bumpy

### Both Anywhere Map Duo and the '696 support:

- IFR and VFR maps
- Terrain and Obstacles
- Jet and Victor airways
- Airspace warnings
- Airport Taxi Diagrams
- Airport Directory information
- Simulated aircraft instruments on the moving map display
- XM Weather on the GPS Map
- FAA Approach Plates

### The Anywhere Map Duo system does all this PLUS:

- Detailed Sectional Map imagery
- Aircraft position on the Approach Plate
- Terrain awareness on the Approach Plate
- UltraTAWS™ 90 meter high resolution terrain
- Custom annotation (markups) on the Approach Plate
- Fuel Prices on the Map and in the Airport directory
- Cones of Safety®