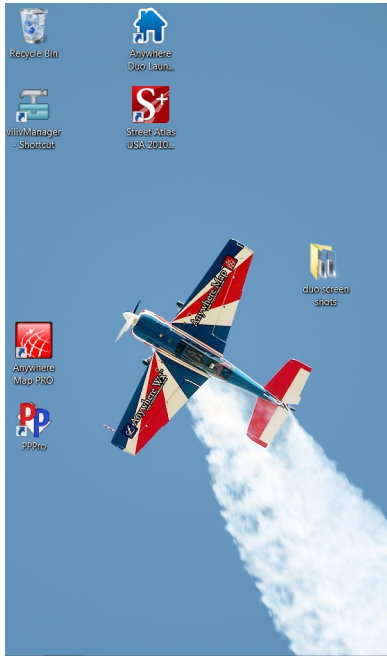
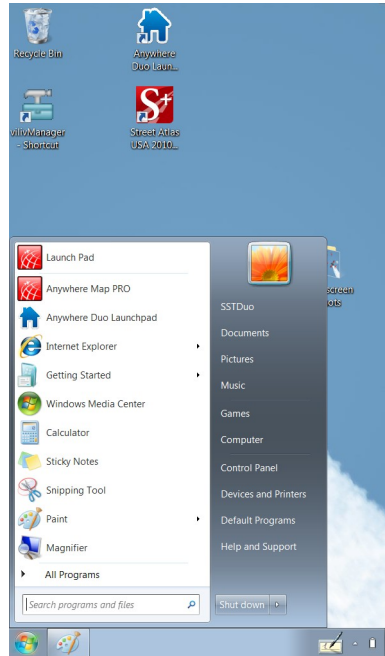


Anywhere DUO Bluetooth Setup Instructions

Power on Tablet



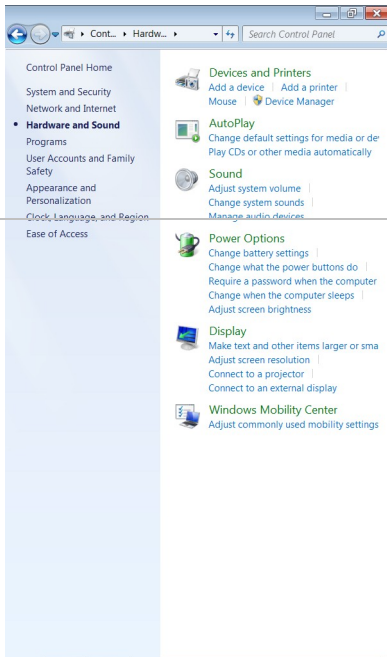
Tap Menu button to call up the Start menu



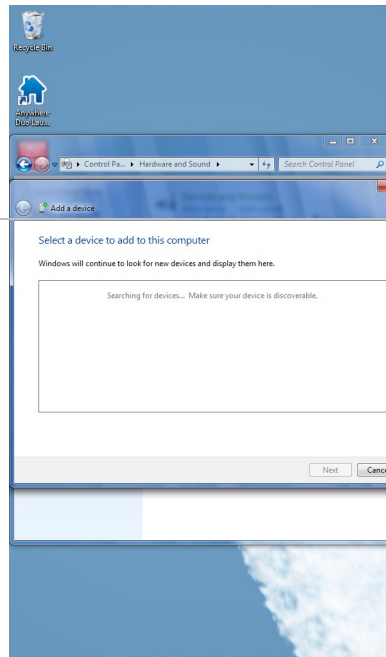
Tap on Control Panel



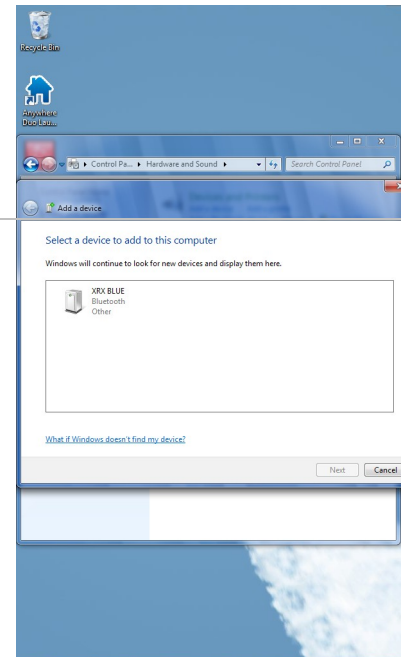
Tap on Devices & Printers



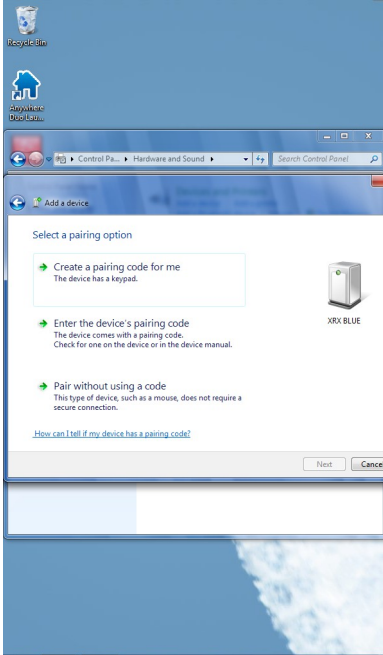
Tap on Add A Device



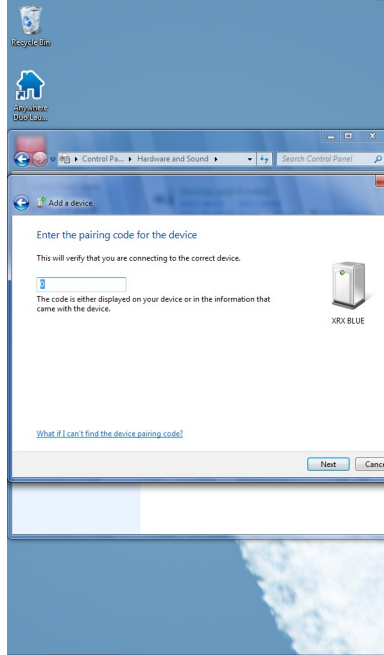
Tap on Device you want to set up > Next



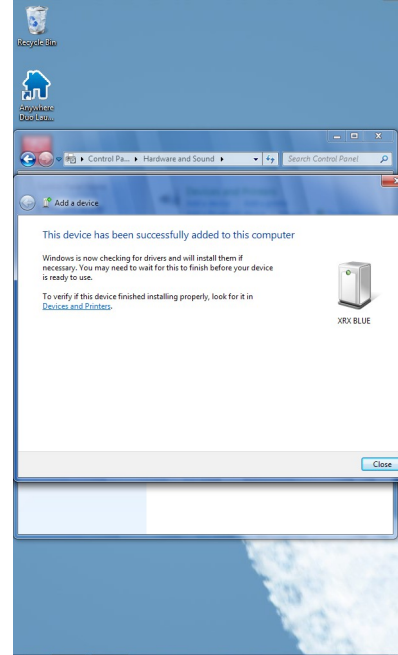
Tap on “Enter the Device’s Pairing Code”



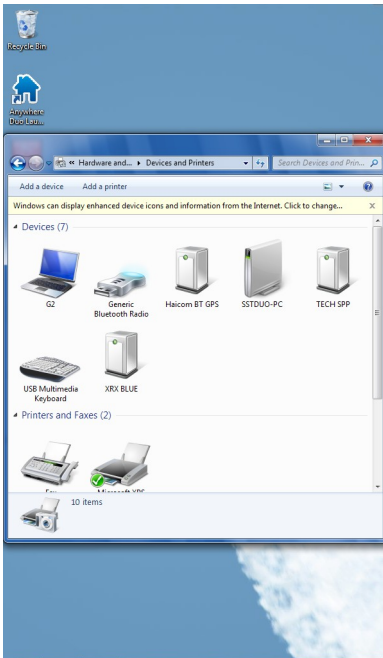
Enter the pairing code > Next



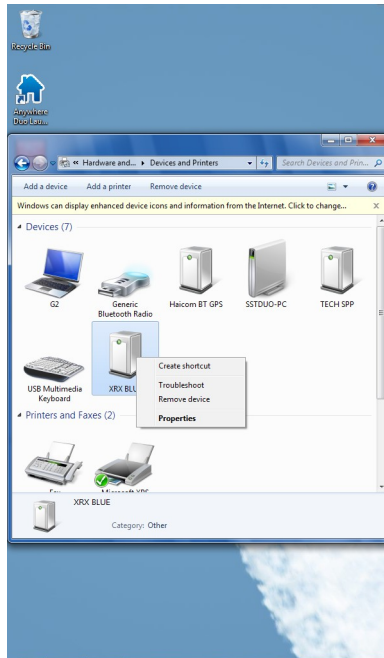
Connection is Complete



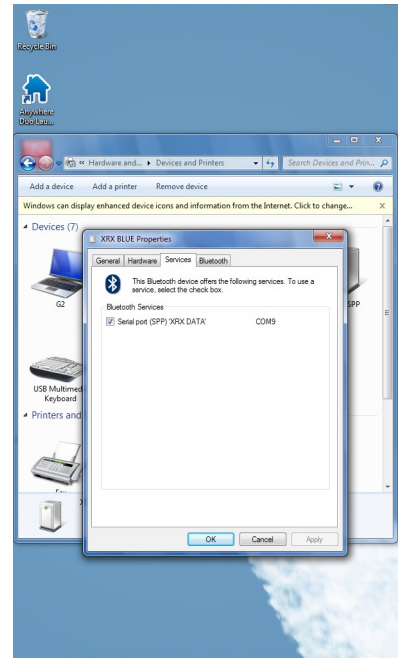
Tap on “Devices & Printers”



Press & Hold on BT device icon > Tap on Properties



Tap on Services > Write down Com Port for reference



Pairing Codes: GPS- 0000 or 1234 WX- 0 or 9679 XRX-0

Repeat above process for all Bluetooth Devices.

For GPS, XM, and XRX connections, continue with setup within Anywhere Map and/or Pocket Plates.

- GPS-Settings>GPS Settings>Set Com port as listed above>Baud Rate=4800>Ok
- XM-WX/Download>Weather Configuration>Set Com port as listed above>Check “Enable XM”>Ok
- XRX-settings>XRX Settings>Enter XRX code if not already entered>Set Com Port>OK