

Flight Plans

Create a flight plan

1. Tap **Universal Finder** icon
2. Tap in ident box
3. Enter **identifier** (w/o "K"), note airport ident displays
4. Tap **Waypoint**

Add a waypoint (using Universal Finder)

1. Tap **Universal Finder** icon
2. Tap waypoint type tab at top (Airport, VOR, FIX, User WPT)
3. Tap in ident box
4. Enter **identifier** (w/o "K"), note waypoint ident displays
5. Tap **Waypoint**
6. Tap **As a waypoint**

Add a waypoint (using screen)

1. Note waypoint on screen (navaid, airport, fix)
2. Double tap the item
3. Tap **Wpt/Fly To**
4. Tap **As a waypoint**

Flight Plan Amendments and Management

Flight Plan Screen

Tap

To remove a waypoint:

1. Tap once on a waypoint to select it
2. Tap **Delete WP**

To re-sequence a waypoint

1. Tap once on a waypoint to select it
2. Tap Edit Tab
3. Tap **Move Up** or **Move Down**

To Save a Flight Plan

1. Tap
2. Tap **Save**
3. Tap in **Save As:** box
4. Type in flight plan name
5. Tap **OK**

To Load a saved flight plan

1. Tap
2. Tap **Load**
3. Tap on flight plan name to select it
4. Tap **OK**

To clear a flight plan

1. Tap
2. Tap **Clear**
3. Confirm **Yes**

Start Up Checklist

1. Start Aircraft
2. Tablet **ON**
3. Check BT **ON** (as required)
4. GPS ON / XM Pwr. **ON**
5. Check LED lights **ON**
6. Start Anywhere Map XP

Shut Down checklist

1. Shut down software: **File > Exit > Yes**
2. Power **OFF** GPS
3. Power **OFF** tablet
4. Power down Aircraft

AnywhereLink

Connect your tablet to the Internet to install the following updates. (*Note: Disables XM WX*)

1. Tap **Tools > Update Database**
2. Tap **Tools > Download Fuel Prices**
3. Tap **Tools > Download TFR/SFR Data**



Tap these buttons to download NEXRAD, Infrared data, or choose download options from a list.

Re-Enable XM WX

1. Tap on the **Weather** menu
2. Choose **Weather Configuration**
3. Check **Enable XM Weather**
4. Tap **OK** button

VNAV

To Airport (using screen)

1. Tap
2. Check Box: "Begin Descent at VNAV...."

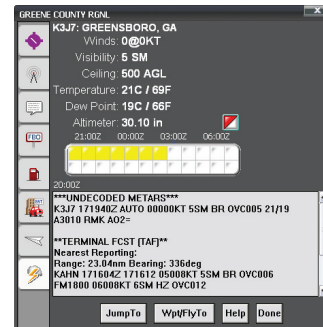
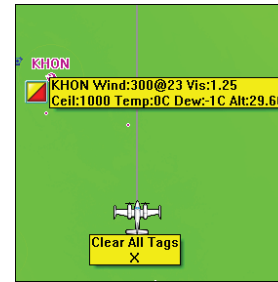
To Waypoint

1. Tap
2. Tap the waypoint for which VNAV is to be set.
3. Move VNAV slider to desired altitude or tap to right or left of the slider to move it (slider only moves in 500' increments, fine tune with L/R switch.)
4. Tap **OK**
5. Rate of Descent / Climb shows in lower right corner of map. Target Arc (intersection with VNAV altitude based on current RoD/RoC) shows on flight path ahead.

Virtual ILS (with flight plan)

1. Double tap destination airport or use universal finder.
2. Tap approach tab down left side
3. Tap VILS for runway of choice
4. Tap **Activate Approach**
5. Modify VILS parameters as required
6. Tap **USE**

SATELLITE WEATHER



Pocket Plates Guide



*Requires UltraTAWS™ Expansion Pack. **Requires XM WX.

Open A Procedure In Pocket Plates PRO

1. Tap **Airport Lookup** Button.
2. Enter Identifier without ICAO.
3. Tap desired procedure.
4. Tap **OK** button.

Open A Procedure From Anywhere Map PRO

1. Open destination **Airport Info** screen.
2. Tap approach feather icon.
3. Tap desired procedure.
4. Tap **Open In Pocket Plates** button.



Eraser button clears all doodles.

Doodle Mode

1. Tap Doodle Mode button.
2. Now you can write on the screen. Annotations will be automatically saved with the procedure.

Anywhere Map Legend

- OBSTRUCTIONS**
- 1000 ft. and higher AGL
 - below 1000 ft. AGL
 - Group Obstruction

VOR

Non-Directional Radiobeacon

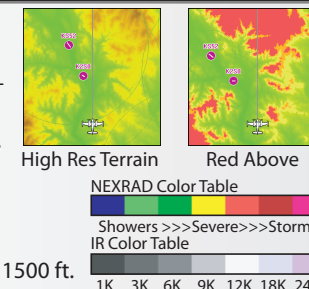
Hard surfaced runways 1500 ft. to 8069 ft. in length.

Hard surfaced runways greater than 8069 ft. in length or some multiple runways less than 8069 ft.

Fix

Nuclear Power Plant

Sports Stadium



Graphical Metars

Ceiling	Visibility
>10,000 ft.	>10 mi.
>3,000 ft.	>5 mi.
1-3,000 ft.	3-5 mi.
500-1,000 ft.	1-3 mi.
<500 ft.	<1 mi.

Stadium, nuke, ADIZ

Prohibited

Class B, C

Class D

Restricted

MOA

Alert

XM WX Toggle Toolbar

- NEXRAD
- Light Precip
- Loop NEXRAD
- IR Sat. Images
- Lightning
- Graphical METARS